

# INSIDE TRACK.

**SALES GUIDE SWISS TRAVEL SYSTEM.**

[mystsnet.com](http://mystsnet.com)



**Switzerland.**  
by train, bus and boat.

Wengernalp Railway in Lauterbrunnen, Bernese Oberland



## Area of validity Swiss Travel Pass

Swiss Travel Pass Youth | Swiss Travel Pass Flex | Swiss Travel Pass Flex Youth

Legend:

- Red line: Lines for unlimited travel
- Blue line: Lines with reductions (50%, 25%)
- Red dot: Also valid for local public transport

Key locations marked on the map include: Grindelwald, Kleine Schlegelg, Wengen, Kleine Schlegelg, Kleine Schlegelg-Jungfrau, Grindelwald Terminal-Eigersteg, and Grindelwald Terminal-Eigersteg.

## Area of validity Swiss Half Fare Card

Legend:

- Red line: Lines with reductions (50%)
- Blue line: Lines with reductions (50%)
- Red dot: Also valid for local public transport

## Premium panoramic trains

Bernina Express	Gothard Panorama Express
Glacier Express	Luzern-Interlaken Express
GoldenPass Express	

A seat reservation and/or supplement is required to travel on some trains/buses/boats such as the Glacier Express, Bernina Express, Gothard Panorama Express, Palm Express, etc.



International arrival  
Page 6-7

## Premium panoramic trains

**Bernina Express**  
Page 12–13

**Glacier Express**  
Page 14–15

**GoldenPass Express**  
Page 16-17

**Gotthard Panorama Express**  
Page 18-19

**Luzern-Interlaken Express**  
Page 20-21

## Page 22-37

## Glacier 3000

## Page 24–25

## Gornergrat

## Page 26-27

ungfrau joch

## Page 28-29

## Mount Rigi

## Page 30-31

## Schilthorn

## Page 32-33

**More mountain excursions**  
Page 34–37

### Scenic routes

## Page 38-45

### Take Lucerne Cruises

## Page 40-41

## Central Alps Passes PostBus Route

## Page 42-43

### More scenic routes

## Page 44-45

## Theme routes

## Page 46-47

### Regional passes

## Page 48-49

and

## Services




**Switzerland.**  
Immenstadt  
by train, bus and boat.  
Sonthofen



Version: 12.2023  
Due to lack of space not all lines are indicated.  
Subject to change.

1:600 000

0 10 20 30 km



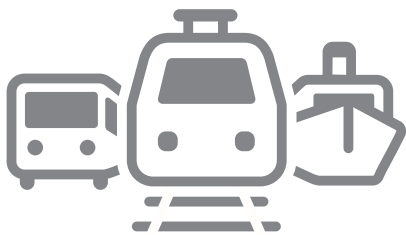




GOOD TO KNOW:

# CAREFREE TRAVELLING.

Swiss public transport is unique in the world. On the following pages, you will find out about the basics of the Swiss Travel System. This will help you to plan sustainable experiences and assist your clients with the organisation and booking of tailor-made solutions for their dream travels.



### Public transport network

The Swiss public transport network includes over 29,000 kilometres (8,000 miles) of rail, road and waterway. It is therefore the densest network in the world.



### Harmonised timetable

For international arrivals or onward journeys, trains and buses are available at border stations and airports. Connections are guaranteed in all places. Where no train service is available, the journey continues by bus, boat or even mountain railway. Hence, transferring is simple and easy throughout Switzerland.



### Regular-interval timetable

Trains always leave at the same minute after each full hour. Main intercity connections operate at half-hour intervals. At major traffic hubs, trains arrive every full and half hour. Bus and boat connections are perfectly coordinated with these regular-interval timetables. The complete timetable is available at [sbb.ch](https://www.sbb.ch).



### Train categories

InterCity (IC) trains connect larger cities without intermediate stops. InterRegio (IR) and RegioExpress (RE) trains connect medium-sized centres within Switzerland. Regional trains serve all intermediate stations and provide access to the smaller branches of the network. Major urban centres have their own suburban railway ("S-Bahn") network. These trains, specially marked with an "S", optimally serve the urban and suburban areas with a high-frequency timetable.



### 1st class – comfortable travelling

Those who appreciate a bit of luxury travel 1st class. 1st class coaches provide additional amenities such as wider seats, more legroom and electrical power outlets. Furthermore, 1st class passengers benefit from quiet and business zones. Swiss boats also offer a choice between 1st and 2nd class. The 1st class is usually located on the upper deck, which offers a magnificent view of the scenery.



### Seat reservation

In Switzerland, most trains do not require a seat reservation. Trains offering seat reservation are marked with an "R" in the timetable at [sbb.ch](https://www.sbb.ch). For panoramic trains with mandatory seat reservation, reservations should be made at the earliest convenience. Groups: Reservations for groups of 10 or more persons can be made free of charge. Information signs and loudspeaker announcements on the train notify travellers of seat reservations.



### Surcharge

No surcharge applies on national, InterCity or InterRegio trains within Switzerland. Panoramic trains such as the Glacier Express and the Bernina Express as well as some Post-Bus lines (Palm Express) are usually subject to surcharge and/or requires a seat reservation.



### Rail traffic information

Information about the current traffic situation and possible disruptions on the railway network is available around the clock via [sbb.ch/166](https://www.sbb.ch/166).



### Security on public transport

Public transportation in Switzerland is generally very safe. Security personnel routinely tours public transportation to guarantee the safety of the passengers. Criminal offences happen very rarely. By far the most common offence is travelling without a valid ticket. However, travellers are advised to follow the usual precautions against petty offences ([comp. page 51](#)).



### Barrier-free travel

Services for people with impaired mobility, hearing or vision cover the entire travel experience – from booking till after the trip. With digital apps, visual and acoustic signals, qualified and attentive staff at stations as well as continuous investments in infrastructure, Switzerland enables people with disabilities to enjoy as independent a travel experience as possible.

Swiss Travel Pass.



# SWISS TRAVEL PASS. & CO.

Swiss Travel System tickets and passes are the key to Switzerland's public transport network. They meet every travel requirement and guarantee virtually unlimited travel by train, bus and boat with just one single ticket.



Heading for the train with the Swiss Travel Pass, Zurich main station



### Swiss Travel Pass and Swiss Travel Pass Flex

**Coverage:** unlimited travel by train, bus and boat including premium panoramic trains and public transport in more than 90 towns and cities. **Validity:** 3, 4, 6, 8 or 15 consecutive (or freely selectable) days within one month (Flex). **Bonus:** 50% discount on most mountain excursions and free admission to more than 500 museums nationwide. **Discounts:** young travellers up to their 25th birthday receive a 30% discount off the regular Swiss Travel Pass price.

### Swiss Half Fare Card

**Coverage:** up to 50% discount on travels by train, bus and boat as well as most mountain railways and public transport in over 90 cities. **Validity:** 1 month.

### Swiss Family Card

**Coverage:** free of charge family card complementary to the Swiss Travel System ticket. Children from their 6th up to their 16th birthday travel free of charge when accompanied by at least one parent holding a Swiss Travel System ticket. They (not accompanied by a parent) receive a 50% discount on the entire Swiss Travel System product range.

### Prices 2024

*All prices at a glance*

### More tickets

- [Eurail/Interrail](#)
- [Point-to-point tickets](#)
- [Supersaver tickets](#)
- [Day Pass](#)
- [Group tickets](#)
- [Regional travel system tickets](#)
- [Tickets for children](#)



# INTERNATIONAL ARRIVAL.

FOR A RELAXED ARRIVAL IN SWITZERLAND.



Astoro train in Goldach, St. Gallen



Railjet on the Linth plain, Eastern Switzerland



TGV Lyria on the bridge over the Aare, Olten



EuroCity on the Lorraine railway viaduct, Berne



### Travelling by air.

Switzerland's main airports link perfectly to the country's public transport network. The journey from and to the airport is covered by all Swiss Travel System tickets.



### Travelling by train.

Connected at the heart of Europe: numerous daily train connections link Switzerland to its neighbours. Whether from Amsterdam, Prague, Budapest, Graz, Paris, Venice or Hamburg, trains take travellers directly to the Swiss hotspots. Ample elbow room, catering facilities, and a wide range of onboard services instead of luggage limitations and waiting times allow guests to switch to relaxation mode right at departure.



### Travelling by train → from Germany.

In addition to the Intercity-Express (ICE), Intercity (IC) and Eurocity (EC) trains arrive directly at the city centres of Basel, Berne, Chur, Interlaken, Lucerne, Lugano, and Zurich from Germany.

### Travelling by train → from Austria.

With the comfortable Railjet or the Eurocity trains, travellers arrive in Zurich at two-hour intervals daily. Perfect onward connections to all Swiss regions are guaranteed.

### Travelling by train → from France.

With three service classes to choose from, travellers reach Swiss cities more than 20 times each day from France – fast and direct on the TGV Lyria.



### Travelling by train → from Italy.

Thanks to numerous daily connections, Switzerland is only a stone's throw away from Italy. Arriving by EuroCity through the Alpine massif is wonderfully comfortable – and undeniably fast.

### International night train connections.

Travellers can reach some of the most beautiful European cities easily while asleep: with the ÖBB Nightjet or the EuroNight trains of various partners. Simply stepping on the train in the evening, they are bound to arrive well rested the next morning after a comfortable night.





# GRAND TRAIN TOUR OF SWITZERLAND.

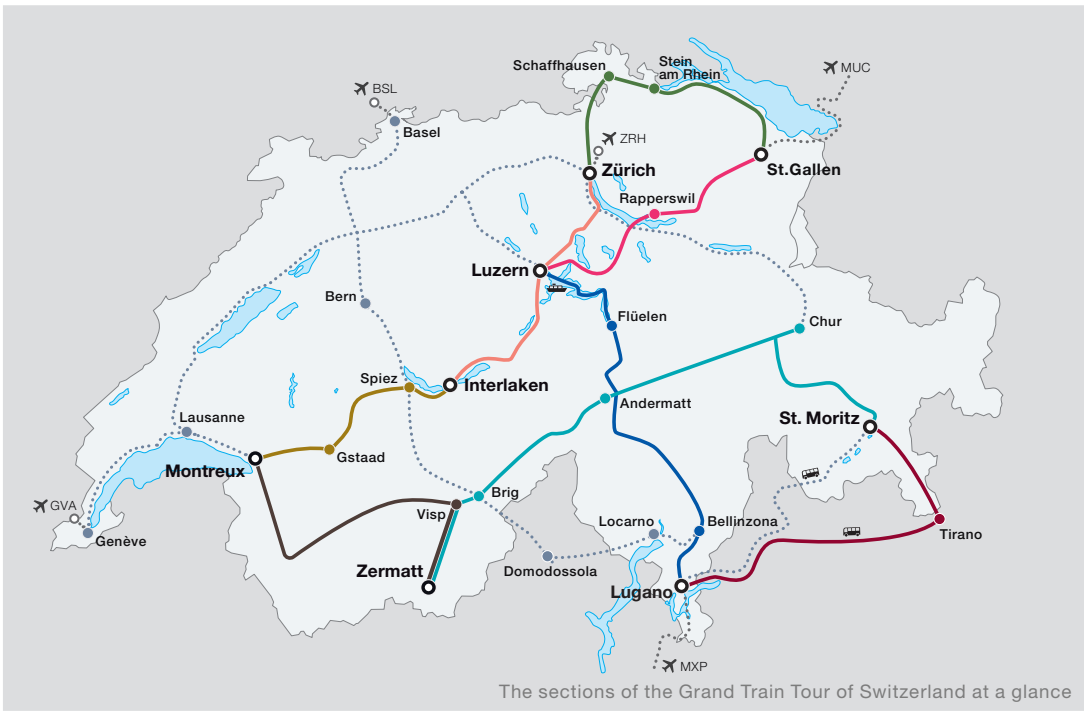
ALL HIGHLIGHTS ON ONE ROUTE.

The Grand Train Tour of Switzerland is the ultimate train journey through Switzerland. It merges all the famous premium panoramic lines into one spectacular round trip and takes visitors to the most popular sights and landmarks – all in complete comfort.

- Zürich → Luzern → Interlaken ⌚ 2 ¾ h
- GoldenPass Express ⌚ 3 ¼ h
- Montreux → Visp → Zermatt ⌚ 2 ½ h
- Glacier Express ⌚ 7 ¾ h
- Bernina Express ⌚ 6 ¾ h
- Gotthard Panorama Express ⌚ 5 ½ h
- Voralpen-Express ⌚ 2 ¼ h
- St. Gallen → Schaffhausen → Zürich ⌚ 2 ½ h



Luzern-Interlaken Express at Lake Brienz, Bernese Oberland



The sections of the Grand Train Tour of Switzerland at a glance



GoldenPass Belle Epoque above Lake Geneva

## Travel suggestions.

Several travel suggestions offer routing ideas for the Grand Train Tour of Switzerland. Some tours take no longer than three days to explore. *Packages at special B2B conditions are available for all journeys.* However, travellers may also experience the suggested routes individually with their Swiss Travel Pass.

## Routing ideas

- **«Original»**  
the entire Grand Train Tour of Switzerland, starting from 8 days
- **«Winter Magic»**  
through the Swiss winter wonderland, starting from 8 days
- **«Classic»**  
the most popular route, starting from 7 days
- **«Top Attractions»**  
a route packed with Swiss highlights, starting from 5 days
- **«Glaciers & Palm Trees»**  
impressive glaciers and magnificent mountain lakes, starting from 4 days

- **«Hidden Treasures»**  
to Switzerland's insider tips, starting from 3 days
- **«Stunning Waters»**  
a ride along lakes and rivers, starting from 3 days

More details about all travel suggestions at [MySwitzerland.com/grandtraintour](https://www.myswitzerland.com/grandtraintour)



Grand Train Tour of Switzerland App  
[MySwitzerland.com/traintourapp](https://www.myswitzerland.com/traintourapp)



### General information for all travel suggestions

Duration, start and end point, as well as all offers available with the excursions can be flexibly adapted to your client's wishes.

Using the agent's access, tailor-made packages can be created in no time. Travel agencies and event organisers can obtain all packages via Railtour Suisse and Switzerland Travel Centre.



PREMIUM  
**PANORAMIC TRAINS.**



Luzern–Interlaken Express at Lake Lungern, Central Switzerland





Bernina Express in Autumn in front of Morteratsch, Grisons



Bernina Express at the Lago Bianco, Grisons



Bernina Express at the Lago di Poschiavo, Grisons



# BERNINA EXPRESS.

This premium panoramic train connects the north of Europe to its south – leading right through the UNESCO World Heritage Site of the Rhaetian Railways.



More information, such as timetable and prices, at:  
[berninaexpress.ch](http://berninaexpress.ch)  
[mystsnet.com/berninaexpress](http://mystsnet.com/berninaexpress)



**Highlights →**  
Travel duration:  
Chur–Tirano 4 h 20 min  
St. Moritz–Tirano 2 h 15 min  
Tirano–Lugano 2 h 10 min

**Landwasser Viaduct.**  
Between Thusis and St. Moritz, the 65-metre-high (213 feet) Landwasser Viaduct, coming into view not far from the village Filisur, is the most spectacular bridge construction on the entire Albula Line. The viaduct is made from natural stone and has a length of 142 metres (466 feet). It spans the pristine Landwasser Valley in a bold curve – and dives right into a tunnel.

**UNESCO World Heritage Rhaetian Railways.**  
The Rhaetian Railways in the Albula/Bernina landscape has been a UNESCO World Heritage Site since July 2008. The railway route between Thusis (Grisons/CH) and Tirano (Valtellina/IT) is an excellent example of the technologically innovative development of a mountainous region. As Europe’s highest Alpine traversal, it is also one of the most spectacular railway lines in the world.

**Bernina Glaciers.**  
Three impressive glaciers are among the highlights of the journey. In the Montebello curve, the Morteratsch Glacier comes into view. The open crossing of the Bernina Pass at 2,253 metres (7,392 feet) a.s.l. with a view of the Cambrena Glacier is another memorable experience. Alp Grüm may well harbour the only hotel/restaurant solely accessible by train or on foot. During a photo stop, visitors enjoy the wonderful view of the Palü Glacier and the Bernina Massif.

**Lago di Poschiavo.**  
This lake was dammed up by a pre-historic rockslide. Hence, there is no man-made dam in the valley, but just a water reservoir at the south end that helps to control the water level. Le Prese and Miralago, two small villages and popular holiday spots, sit right at the Lago di Poschiavo. At Valposchiavo, the Bernina Express train tracks run along the scenic lakeshore.

**Circular Viaduct Brusio.**  
The Circular Viaduct is the most distinctive landmark along the Bernina Line. Below Brusio, the Bernina Express negotiates a full altitudinal belt – all without a single tunnel. The open route over the viaduct offers a full view onto this masterpiece of railway engineering and reveals a breathtaking panorama.

**Bernina Express Bus.**  
Between February and November, the Bernina Express route can be extended aboard the Bernina Express Bus waiting at Tirano. Through the picturesque Valtellina Valley, the journey continues to Sondrio, Morbegno, and the idyllic Lake Como before finally reaching Lake Lugano and returning to Switzerland. The final stop is Lugano, the cultural centre of Ticino. Of course, guests can enjoy this beautiful bus ride in the opposite direction as well.





St. Moritz – Andermatt – Zermatt

# GLACIER EXPRESS.

The eventful, roughly eight-hour journey on the Glacier Express passes deep ravines, high passes, shimmering mountains, sparkling lakes, and idyllic mountain villages – not to mention 291 bridges and 91 tunnels.



More information, such as timetable and prices, at:  
[glacierexpress.ch](http://glacierexpress.ch)  
[mystsnr.com/glacierexpress](http://mystsnr.com/glacierexpress)



Glacier Express in the Rhine Gorge, Grisons



Excellence Class on the Glacier Express



Glacier Express on the Landwasser Viaduct, Grisons



**Highlights →**  
Travel duration: 7 h 45 min

## Excellence Class.

Between St. Moritz and Zermatt, Excellence Class takes guests on a journey for the senses: as the scenery rolls by outside, passengers enjoy an exquisite 5-course menu accompanied by select wines. This makes the new Excellence Class one of the most exclusive touristic highlights of Switzerland.

## Service and features.

After check-in at the Welcome Desk in front of the Excellence coach and hand-over of the luggage on the platform, nothing stands in the way of an unforgettable journey. Each passenger enjoys an individually adjustable window seat. A personal Concierge Service ensures a high-quality experience in this exclusive travel class. The exclusive Glacier Bar of the Excellence Class invites guests to linger.

## A refined culinary experience.

In Excellence Class, a glass of Champagne and an appetizer plate make for a perfect opening. Gourmands are treated to an exquisite 5-course menu accompanied by selected wines. The dishes consist of regional ingredients and take guests on a culinary journey through Switzerland – which must include a glass of good wine or a refreshing drink as a matter of course.

## Supplementary offer subject to charge.

Paris, London, New York, and Shanghai are famous for their bar culture. However, connoisseurs also get their money's worth in Switzerland. On the Glacier Express, an exquisite range of first-class wines can be sampled. Select liquors – of the sort that may otherwise be found in a cocktail bar in SoHo – complete the offer. These services are charged separately.

## Reservation for individual travellers.

Seat reservation in Excellence Class is required and bookable on train compositions 902/903/923. Seats in Excellence Class can be booked via the usual Glacier Express booking system. The Glacier Express pre-booking deadline of 93 days also applies to Excellence Class.

## Surcharge and ticket.

The surcharge for Excellence Class is CHF 470 and will be charged together with the reservation. Excellence Class seats are available to holders of a 1st class ticket for the entire route St. Moritz – Zermatt or Zermatt – St. Moritz. The surcharge for the seat reservation is added to the price of the 1st class ticket.





GoldenPass Express in Rougemont, Vaud



Gastronomy in the travel class "Prestige"



GoldenPass Express in Schönried, Bernese Oberland



# GOLDENPASS EXPRESS.

Eagerly awaited for over 100 years: the journey between Montreux, Gstaad and Interlaken without the need to change trains. The new travel class “Prestige” offers hitherto unmatched comfort on the GoldenPass panoramic line.



More information, such as timetable and prices, at:

[gpx.swiss](http://gpx.swiss)  
[mystsn.net/goldenpass-express](http://mystsn.net/goldenpass-express)



**Highlights →**  
Travel duration: 3 h 15 min

**Prestige.** This exclusive travel class on the GoldenPass Express offers discerning travellers everything they might expect from an unforgettable train journey: plenty of privacy, maximum comfort in a luxury compartment, and an exquisite culinary offer. The heatable leather seats are slightly elevated and can be rotated if desired. High panoramic windows allow travellers to immerse themselves in the beautiful scenery.

**Indulging the palate.** Local and international delicacies can be ordered in advance and provide the perfect start into a thrilling journey. How about a glass of Champagne and a serving of the finest caviar from Frutigen? For those who prefer to treat their palate to something a little more rustic, the mountain platter or a vegetarian dish might be just the thing.

**Swissness.** Not only is the GoldenPass Express one of a kind worldwide but also a feat of Swiss engineering. The idea of connecting Interlaken and Montreux without the need to change trains has come up more than 100 years ago. The elegant GoldenPass Express is the first train that relies on an adjustable bogie that allows to change between different gauges on the route within seconds – and not even noticeable for the guests on the train. Ingenious.

**Language border.** The GoldenPass scenic route crosses the German-French language border, colloquially dubbed the “Röstigraben” (referring to the cultural differences between the German- and French-speaking parts of Switzerland). Between Saanen and Rougemont, the GoldenPass MOB trains cross the bridge over the Grisch stream, which marks this language border. The landscape gradually changes to the Mediterranean flair of the “Swiss Riviera”.

**Gstaad.** Known as the health resort of the rich and famous, Gstaad impresses with beautifully decorated chalets and abounds in Alpine charm. The Niklaus Chapel and the railway viaduct are well worth a visit. During the intermediate stop, you may get a chance to stroll through the pedestrian zone, savour the view from the famous Palace Hotel while indulging in a cup of coffee and a piece of cake, or enjoy some of the famous aromatic sliced cheese at the traditional Restaurant Rössli.

**Montreux.** For more than 50 years, this musical town has organized the world-famous Montreux Jazz Festival. The legendary rock band Queen produced six of their albums in the Mountain Studios at Lake Geneva. In memoriam of Freddy Mercury, a larger-than-life statue was erected in his honour. Fantastic views can also be enjoyed from the Rochers-de-Naye, easily accessible by cog railway from Montreux.





Gotthard Panorama Express with the church of Wassen, Uri



Tour guide explains the highlights along the route



Gotthard Panorama Express in Flüelen, Central Switzerland



Gotthard  
Panorama Express

# GOTTHARD PANORAMA EXPRESS.

When the journey becomes an adventure:  
guests experience history on the  
Gotthard Panorama Express.  
A personal journey by boat and train  
between Central Switzerland and Ticino.



More information, such as timetable and prices, at:  
[sbb.ch/gotthard-panorama-express](https://sbb.ch/gotthard-panorama-express)  
[mystsnet.com/gopex](https://mystsnet.com/gopex)



**Highlights →**  
Travel duration: 5 h 30 min

### Focusing on the guest.

Hospitality is key on the Gotthard Panorama Express. The charismatic team – tour guides, catering team, and train crew – strive for excellence every day anew to make guests from all over the world feel welcome and well looked after.

### Tour guidance.

The Gotthard Panorama Express unites. There is nothing more rewarding for the tour guides than talking with the guests, familiarising them with the Swiss culture and learning more about their homeland. Showing the visitors sights and landmarks along the route and providing interesting information is both joy and vocation.

### Catering Team.

Guests can lean back, relax, and savour culinary specialties and exquisite wines from the region while enjoying the breathtaking scenery. Whether a snack in-between or a Ticino-style platter, the catering team will meet every wish in the panoramic train of the Gotthard Panorama Express. Guests do not even have to leave their seats.

### Photo coach.

There is a multitude of highlights along the Gotthard panoramic route. Guests will experience them in an unforgettable way in the photo coach in the middle of the train. To take exciting pictures, the windows can remain open even during the passage through the Gotthard Tunnel. Thus, the journey becomes more immediate, and passengers can travel back in time to when the tunnel was built.



Luzern–Interlaken Express  
**zb** Die Zentralbahn.

# LUZERN– INTERLAKEN EXPRESS.

The journey is its own reward: the ride on the Luzern–Interlaken Express connects two world-famous destinations and draws to its close more quickly than travellers would wish.



More information, such as timetable and prices, at:  
[zentralbahn.ch/interlaken-express](http://zentralbahn.ch/interlaken-express)  
[mystsnet.com/liex](http://mystsnet.com/liex)



Luzern–Interlaken Express on Aare Bridge, Bernese Oberland



Bistro car on the Luzern–Interlaken Express



Luzern–Interlaken Express at Lake Lungern, Central Switzerland



## Highlights →

Travel duration: 1 h 50 min

## Five lakes in just under two hours.

Few other lines pass this many lakes: shortly after leaving the city of Lucerne, Lake Lucerne and Lake Alpnach come into view on the left-hand side, followed by Lake Sarnen and the idyllic Lake Lungern. For the last half hour, the route runs along Lake Brienz, sparkling in beautiful turquoise. The journey ends at Interlaken, situated between Lake Brienz and Lake Thun.

## Bistro: the rolling à-la-carte restaurant.

Whether a choice of breakfasts, a range of various lunch menus that alternate on a regular basis, or themed culinary specialities: the bistro team provides whatever the hungry traveller's heart desires.

## Pole position.

A perfect offer for those who've always dreamed of sitting all the way in the very front of the train to experience the ride from a unique perspective. Starting in Interlaken or Lucerne, a special adventure awaits right there in the driver's cabin, where the passenger can literally look over the train driver's shoulder and enjoy the ride across the beautiful natural scenery, over bridges, and through tunnels from the driver's point of view.



# MOUNTAIN EXCURSIONS.







GLACIER 3000

# GLACIER 3000.

The ascent by cableway to 3,000 metres (9,842 feet) altitude takes a mere 15 minutes. The breathtaking panoramic view of Matterhorn, Mont Blanc, and Jungfrau draws guests to the top – as does the Peak Walk by Tissot.



View of Peak Walk by Tissot, Vaud



Cable car at Glacier 3000, Vaud



More information, such as timetable and prices, at:  
[glacier3000.ch](http://glacier3000.ch)  
[mystsn.net.com/glacier3000](http://mystsn.net.com/glacier3000)



Peak Walk by Tissot



**Mountain highlights →**  
Travel duration  
from Col du Pillon: 15 min

## Peak Walk by Tissot.

Walking over the Peak Walk by Tissot, a 107-metre-long (351 feet) suspension bridge, is an adventure in its own right. This suspension bridge – unique in the world – connects two mountain peaks. Guests marvel at no fewer than 24 peaks of over 4,000 metres (13,000 feet), among which are Jungfrau, Mönch, Eiger, Matterhorn, and Mont Blanc.

## Panoramic gondola.

Glacier 3000 is one of the best-accessible glaciers of Switzerland. The panoramic gondola can transport up to 125 people from 1,500 to 3,000 metres a.s.l. (4,900 to 9,800 feet) in one go. The ride takes a mere 15 minutes, in which guests can reach this Swiss glacier.

## Gstaad connects the GoldenPass scenic route.

With the new GoldenPass Express, visitors benefit from a direct train connection from Montreux (1 h 30 min) or Interlaken (1 h 35 min) to Gstaad. From there, a PostBus takes them to the cableway valley station of the Glacier 3000 in only 30 minutes. So, even the journey there turns into a great experience. Incidentally, luggage lockers are available at Gstaad station.

## Activities in lofty heights.

This mountain attracts visitors with numerous outdoor adventures. Plenty of activities such as the Peak Walk by Tissot, the View Point, the Ice Express chair lift and the Snow Fun Park (year-round sledging in the snow) as well as the Glacier Walk are included in the cableway ticket.

## Attractive savings.

The benefits of the Swiss Travel Pass extend to the Glacier 3000 as well. Holders of a Swiss Travel Pass or a Swiss Half Fare Card benefit from a 50% discount on the cableway ride to the summit. An excursion to the Glacier 3000 is popular among families, as children below the age of six travel free of charge. With savings in hand, travellers can elevate their experience by booking optional activities such as a dog sled ride.





Station Gornergrat, Zermatt, Valais



Train POLARIS above Riffelalp, Valais



Valais Black Nose Sheep near Lake Riffel, Valais



# GORNERGRAT.

Travelling by cog railway to the Gornergrat at breezy 3,089 meters (10,135 feet) altitude is a highlight. The ride alone (not to mention the view from the summit) offers countless picture postcard scenes: the Matterhorn, chalets typical of the Valais, and a stunning mountain panorama.



More information, such as timetable and prices, at:  
[gornergrat.ch](http://gornergrat.ch)  
[mystsnet.com/gornergrat](http://mystsnet.com/gornergrat)



**Mountain highlights →**  
Travel duration  
from Zermatt: 33 min

**Hiking experiences.**  
There is much to discover: The “Meet the Sheep” themed trail leads from Gornergrat down to Riffelberg. It passes by Lake Riffelsee (with the famous Matterhorn reflection) and by the Alpine Garden close to Rotenboden station. In summer, approximately 150 Blacknose Sheep are grazing on the alpine meadows between Rodenboden and Riffelberg. They can be tracked by GPS on the Gornergrat website.

**Gourmet Ticket.**  
On this excursion, the gastronomic experiences on the Gornergrat are like pearls on a string. An apéro riche is served at the 3100 Kulmhotel Gornergrat, followed by a 3-course gourmet menu at Riffelberg, and finally a dessert with a coffee speciality on Riffelalp. The various mountain restaurants are accessible by railway, on foot, or on toboggan in winter. The run and the rental are included in the Gourmet Ticket.

**Highest toboggan run in Switzerland.**  
With a length of 1.6 kilometres (1 mile), the roughly 10-minute ride from Rotenboden (2,815 m / 9,236 ft a.s.l.) to Riffelberg (2,582 m / 8,471 ft a.s.l.) is pure fun for young and old alike. Rental toboggans (optionally equipped with children’s seats) and special toboggan day passes are available.

**Zoom the Matterhorn.**  
Visitors will approach the Matterhorn in three steps – or rooms. Room 1: digital telescopes focusing on the Matterhorn. Room 2: 3D projections of the four seasons, different times of day, and the power of nature. Room 3: hang-gliders for virtual paragliding flights around the Matterhorn.

**NostalChic Class.**  
A unique day in the cosy, luxurious atmosphere of a nostalgic coach by Matterhorn Railway awaits visitors. The excursion includes a guaranteed window seat during the ride from Zermatt to Gornergrat; fascinating stories told by an experienced guide; a big choice of gastronomic highlights with local specialities along the way. And much more.





# JUNGFRAU- JOCH.

A mountain of distinction: not only is the Jungfrauoch home to Europe’s highest situated railway station (3,454 m/11,332 ft a.s.l.), but it also belongs to the UNESCO World Heritage Site “Swiss Alps Jungfrau-Aletsch”.



More information, such as timetable and prices, at:  
[jungfrau.ch/jungfrauoch](http://jungfrau.ch/jungfrauoch)  
[mystsnet.com/jungfrauoch](http://mystsnet.com/jungfrauoch)



 **Mountain highlights →**  
Travel duration  
from Grindelwald: 45 min

**Snow Fun Park.**  
Here, guests can get refreshed and try their hands at various winter sports: “snowtubing” with pirouettes on an inflated hoop, speeding down the slope on a sledge, zip-lining over eternal ice on the Flying Fox, or skiing and snowboarding – all of this is possible in the Snow Fun Park. What’s more, it can be done spontaneously: equipment is available for rent on site. The ultimate way to experience snow – even in the summer-time.

**Sphinx viewing platform.**  
Gliding upwards, enjoying the mountain panorama: it takes the lift a mere 25 seconds to overcome 108 metres (354 feet) altitude and arrive at the viewing platform at 3,571 metres (11,716 feet) a.s.l. Once there, it’s just a matter of inhaling deeply and enjoying the view. Incidentally, Europe’s highest research station is also located at the terrace. It is of paramount importance to environmental scientists, astrophysicists, and meteorologists.

**Ice Palace.**  
The more ephemeral – the more beautiful! This is especially true for the “Ice Palace” and its treasures. With ice pick and saw, mountain guides created the halls and corridors in the middle of the Jungfrau firn in the 1930s. Today, artists shape the ice – with a more delicate touch. On an icy round tour through this frosty world, guests discover artworks in many niches. Eagles, penguins, and bears seem frozen in ice, incredibly lifelike, even in sub-zero cold.

**Alpine Sensation.**  
Anybody who steps into the 250-metre-long (820 feet) corridor leading from the Sphinx Hall to the Ice Palace experiences a shiver down the spine. And that’s not only due to the freezing temperatures but also to the memory of the sacrifices that mountain workers made to open the Jungfrauoch to railway technology. 30 memorial plaques bear witness to it. The background music, along with visionary tourist pictures, brings the Jungfrau Railways’ origins to life, giving you goosebumps.

**Jungfrau Panorama.**  
There are times on the Jungfrauoch when you cannot see a mountain for all the clouds. That’s got nothing to do with bad weather, though – on the contrary. Clouds are fascinating. Who has not dreamed of falling into this cottony soft fluffiness? The Jungfrau Panorama film makes it possible: year-round, it takes you on a 360-degree round trip of the surrounding mountain world in a way you couldn’t experience anywhere else.



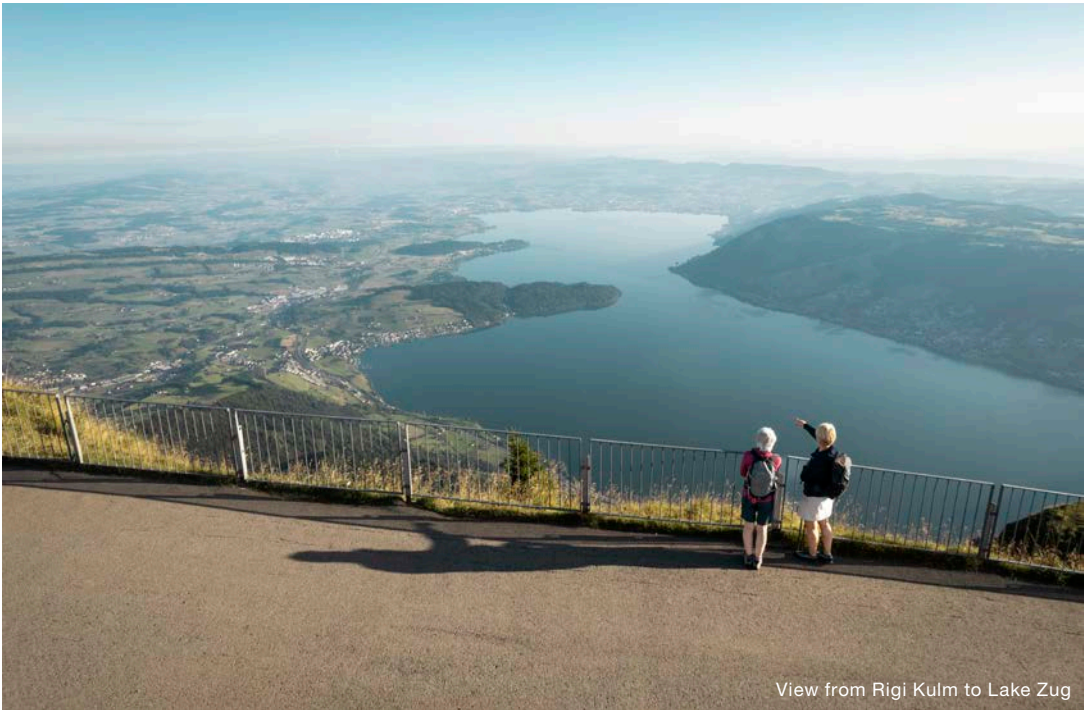


# MOUNT RIGI.

This mountain is a realm of adventures – 365 days a year. At the heart of Central Switzerland, located right between Lake Lucerne and Lake Zug, Mount Rigi is perfect to access from all sides. Simply by train, bus and boat to the foot of the mountain and then up by cableway or cog railway.



More information, such as timetable and prices, at:  
[rigi.ch](http://rigi.ch)  
[mystsnet.com/rigi](http://mystsnet.com/rigi)



View from Rigi Kulm to Lake Zug



Relaxation in the Mineralbad & Spa at Rigi Kaltbad



The new Rigi cog railway between Felsentor and Kaltbad



**Mountain highlights →**  
Travel duration  
from Vitznau: 33 min

### Hiking variety.

A broad hiking network of some 120 kilometres (75 miles) is available for guests on Rigi, offering open spaces away from the hustle and bustle of everyday life. From a comfortable, barrier-free walk to easy hiking tours to mountaineering. Those who like to challenge the mind should visit one of the popular theme trails.

### Swiss tradition.

What springs to mind at words like “tradition” and “Swissness”? The ringing of cow bells? A delicious slice of bread with cheese on a plate or alphorn blowers on a mountain peak? On the Rigi – Queen of the Mountains – all of this can be had. The mountain in the heart of Central Switzerland allows visitors to experience pure Swissness.

### Relaxation at the spa.

Sore muscles from hiking can rejuvenate wonderfully in the mineral bath & spa on Rigi Kaltbad: during a relaxing bath in the spacious indoor-outdoor pool, in the spa area with sauna and resting zone, or during a massage.

### Railway rides – from historical to modern times.

The Rigi Railways deploy some historic trains on the line from Arth-Goldau to Rigi Kulm every day. Visitors enjoy this singular experience of riding up the Queen of the Mountains in well-preserved vintage coaches. Afterwards, guests take a brand-new, energy-efficient train back down to Vitznau.

### Winter hiking.

The possibilities on the Rigi are virtually endless, both in the summer and the winter. 35 kilometres (22 miles) of perfectly maintained hiking trails, from easy altitude walks to two-hour panoramic hikes. Enjoying the pristine snowscapes on one of the three signposted snowshoe trails between 1.1 and 3.5 kilometres (0.7 to 2.2 miles) in length makes for a very special experience.

### Culinary highlights.

Bathing and hiking quicken the appetite. Fortunately, the next “Beiz”, as the locals affectionately dub restaurants, is never far away. Offers range from Rigi alpine cheese fondue at the “Alp Chäserenholz” to the “terroir” food concept of Hotel Edelweiss, where only local products are processed. Numerous restaurants with comfortable terraces invite visitors to linger and enjoy.





# SCHILTHORN.

The Schilthorn area stands for view, thrill, and chill: unforgettable views, adrenaline rushes, and pure relaxation in a pristine mountain world. By train and bus guests reach the valley station Stechelberg. From there, a cableway takes them to the Schilthorn summit at 2,970 metres (9750 feet) altitude.



More information, such as timetable and prices, at:  
[schilthorn.ch](http://schilthorn.ch)  
[mystsn.net/schilthorn](http://mystsn.net/schilthorn)



View of the Schilthorn – Piz Gloria, Bernese Oberland



Skyline Walk at station Birg, Bernese Oberland



Panorama around the Schilthorn – Piz Gloria, Bernese Oberland



**Mountain highlights →**  
Travel duration  
from Stechelberg: 32 min

## 360° restaurant Piz Gloria.

Perfect before or after exploring the mountain: within 45 minutes, the revolving 360° restaurant Piz Gloria completes one full rotation while the breathtaking panorama – a genuine natural spectacle with more than 200 mountain summits – silently glides past. The restaurant serves its guests a wide range of dishes: the popular James Bond Brunch and the delicious 007-Burger among other culinary delights.

## The Bond Factor.

The Schilthorn acquired world renown as the filming location for the James Bond Movie “On Her Majesty’s Secret Service”. To this day, one can follow in the footsteps of the world’s most famous secret agent on Piz Gloria. The interactive exhibition “Spy World” delights Bond fans with movie scenes and background information. From the outdoor terrace, the “Walk of Fame” leads to the Skyline View Platform, where a gorgeous panoramic view onto the surrounding mountains awaits.

## Skyline Walk and Thrill Walk.

Visitors experience a veritable adrenaline rush on the “Thrill Walk” at station Birg:: starting at the platform, the walk leads along a cliff footbridge of 200 metres (656 feet) in length, passing below the cableway station, all over glass and grid floors and a steel cable. Guests at Bistro Birg’s “Skyline Walk” enjoy a unique view of Eiger, Mönch, and Jungfrau while relaxing.

## Mountain village Mürren and Allmendhubel.

From Mürren, the “big three” of the Eiger, Mönch and Jungfrau seem within reach. In addition to the impressive panorama, the car-free mountain village attracts with its typical wooden chalets and the rustic atmosphere. Those who like it more active take the funicular up to the Allmendhubel, where various hiking trails lead back to Mürren.





① **Brien Rothorn Railway.**

Pure nostalgia: since 1892, the Brien Rothorn Railway has steamed its way up to the Rothorn from Brien. Within one hour, the steam cog railway negotiates a difference in altitude of 1,678 metres (5,505 feet), passes through eight tunnels, and thus ranks as an absolute must for railway enthusiasts.

② **CabriO Stanserhorn.**

The journey up to the Stanserhorn offers a beautiful symbiosis of a historic funicular and the state-of-the-art CabriO cableway. The world’s first open-air upper deck on a cableway allows for the ultimate fresh air experience and turns the ride to this scenic outpost of the Lucerne region into a unique treat.

③ **Grindelwald-First.**

Grindelwald-First attracts visitors with a stunning view of the Eiger Nordwand (north face) and is an ideal starting point for hiking tours. Arriving at the top by gondola lift, numerous adventures and fun activities for all ages await amid the picturesque and panoramic mountainscape.

④ **Harder Kulm.**

The panoramic funicular takes guests from Interlaken up to Harder Kulm. After a leisurely stroll to the panorama restaurant, visitors reach the viewing platform “Two Lakes Bridge” with its spectacular views of Eiger, Mönch, and Jungfrau as well as Lakes Thun and Brien.

⑤ **Matterhorn Glacier Paradise.**

The world’s highest 3S cableway takes guests to the “Matterhorn Glacier Paradise” at 3,883 metres (12,740 feet) altitude. From the viewing platform at the summit, visitors admire a stunning total of 38 4,000-metre (13,000-feet) peaks as well as 14 glaciers. At the glacier palace, guests immerse themselves in the mystical world of eternal ice.

⑥ **Monte Generoso, Capolago.**

The ideal destination for free spirits who love nature, architecture, mountain railways, and breathtaking landscapes. And for those who prioritise respect for the environment and enjoy the delight of the best local food and wine connected to the region and its traditions.

⑦ **Pilatus.**

Near Lucerne and easily accessible by public transport, Mount Pilatus is the ideal adventure mountain for active visitors. Two cableways, the steepest cogwheel train in the world, as well as numerous hotels and restaurants in a wonderfully scenic location promise a delightful experience with exciting excursion highlights.



⑧ **Rochers-de-Naye.**

A unique panoramic view over the Swiss and French Alps: from Eiger to Mont Blanc and onto Lake Geneva. The cog railway takes guests to an altitude of 2,000 metres (6,650 feet) and thereby to numerous possibilities for adventure and discovery.

⑨ **Säntis.**

A ride up to Säntis is like a journey to paradise. Reaching the summit is easy with the Säntis cable car: at an altitude of 2,502 metres (8,208 feet), a magnificent view over six countries awaits. The mountain in the Alpstein range is not only renowned as a weather mountain but also fascinates with its natural beauty and is surrounded by a mythical mountain world.

⑩ **Schynige Platte.**

Guests visiting the Schynige Platte by cog railway feel carried back to the “Belle Époque”. The one and only nostalgia railway of its kind in Switzerland equipped with wooden benches and rolling stock dating from the 19th century is reminiscent of a bygone era and the pioneer spirit of the Bernese Oberland.

⑪ **Stoos.**

The world’s steepest funicular leads up to the mountain village of Stoos from Schwyz, inspiring passengers from far and wide. The innovative technology makes it possible for the cabins to adapt perfectly to the incline and always remain level, allowing guests to arrive at the top in complete comfort – despite a 110% gradient.

⑫ **Sunnegga, Zermatt.**

The ride on the underground funicular leads to the so-called “Sunnegga”, or sun corner, at the heart of the Matterhorn Paradise – a popular spot for explorers young and old. Sunnegga is an ideal starting point for numerous excursions and for the onward trip to Blauherd and Rothorn.

⑬ **Testa Grigia.**

With the opening of the Matterhorn Glacier Ride II, a long-cherished dream has become reality: a year-round cable car connection between Zermatt (CH) and Cervinia (IT), called the Matterhorn Alpine Crossing. Embark on this spectacular journey around the Matterhorn to Testa Grigia, while crossing Europe’s highest border.

⑭ **Titlis.**

The ride up to the Titlis on the world’s first revolving aerial cableway is a truly spectacular experience. On this 3,000 metre (9,850 feet) summit, guests are greeted not only by a stunning mountain panorama but also by a variety of adventure-packed attractions – not to mention the sparkling snow and perpetual ice.





# SCENIC ROUTES.



Steamboat Blümlisalp in front of Schadau Castle, Bernese Oberland





Panorama yacht “Saphir” in Lucerne harbour on Lake Lucerne, Central Switzerland



Steamboat “Stadt Luzern” on Lake Lucerne, Central Switzerland



Motor vessel “Diamant” in Lucerne, Central Switzerland



# LAKE LUCERNE CRUISES.

Whether on a historic steamboat, an innovative yacht, or a modern catamaran: Gliding over the water, guests experience the most beautiful side of Central Switzerland.



More information, such as timetable and prices, at:  
[lakelucerne.ch](http://lakelucerne.ch)  
[mystsnet.com/lakelucernecruises](http://mystsnet.com/lakelucernecruises)



**Highlights →**

**Cruise on the Panorama-Yacht Saphir.**

During this one-hour cruise, passengers lean back on the comfortable and spacious seating areas and savour the fantastic views of the lake, the city, and the mountains. The convertible roof on the upper deck and the unique aqua terrace gives the yacht that certain something.

**Sunset Cruise.**

A touch of sunset romance in the ravishingly beautiful evening moods on Lake Lucerne: such culinary nights can be enjoyed daily during summer. The Sunset Cruise takes place either on the modern motor vessel Diamant or on a steamer. Free ride with Swiss Travel Pass (Flex); 50% discount with Swiss Half Fare Card.

**Lunch Cruise.**

Lunch extraordinaire: delicious creations of meat, fish and vegetarian dishes make the Lunch Cruise a particularly delightful experience. The cruise takes place daily and year-round. Free ride with Swiss Travel Pass (Flex); 50% discount with Swiss Half Fare Card.

**Connections to valley stations.**

From the city straight up the mountain: boats take visitors from the city centre to the stations of the Rigi Railways at Vitznau, of the Pilatus Railways at Alpnachstad, and of Bürgenstock at Kehrsiten-Bürgenstock – each a unique combination of boat and mountain railway.





# CENTRAL ALPS PASSES POST- BUS ROUTE

Pure Alpine magic: tackling four impressive Swiss Alpine pass roads by PostBus in one day, thereby negotiating a total of 10,366 metres (34,000 feet) in altitude. Passing sparkling reservoir lakes on the Grimsel Pass, then traversing the famous Nufenen and Gotthard Passes, and finally the scenic Susten Pass.



More information, such as timetable and prices, at:  
[postauto.ch/centralalps](https://postauto.ch/centralalps)  
[mystnet.com/centralalps](https://mystnet.com/centralalps)



Postbus on the Grimsel Pass, Bernese Oberland



Postbus on the Nufenen Pass, Valais



Postbus, Central Alps Passes



**Highlights** →  
Travel duration: 8 h 45 min

## In the footsteps of Sherlock Holmes.

Is there anybody who is not familiar with the famous detective? At the Reichenbach Falls, Sherlock Holmes was locked in a life-and-death fight with his arch-rival. Travellers can catch a glimpse of this scene on the way to the Grimsel Pass by Postbus. The journey continues past the Aare Gorge and offers a breathtaking view over Lake Grimselsee at the top of the pass.

## Travel back in time.

Before the Gotthard Tunnel was opened in 1882, the only connection from north to south led over the Gotthard Pass. On the Postbus, guests can travel back in time to get a glimpse of how this must have felt – with the decisive advantage, of course, that the gradients are easy for the Postbus to negotiate and that it offers its passengers a way more comfortable and pleasant travel experience than the horse-drawn coaches of former times.

## 25 tunnels and 25 bridges.

The ride over the Susten Pass offers deep insights – so to speak. The Postbus traverses all of 25 tunnels on this route – a classic example of Swiss engineering. The rest of the time travellers can let the eye wonder and are rewarded with legendary views into deep gorges. Highlights such as the Devil's Bridge and the Stone Glacier may look forbidding at first sight, but they are hard to match in sheer beauty.

## Relics from the Ice Age.

The Eiger North Face is the ultimate challenge for mountaineers. Nufenen Pass, on the other hand, is the gold standard for passionate pass travellers. At 2,478 metres a.s.l. (8,129 feet), it is the highest Alpine crossing for vehicles and fascinates many visitors. And the best thing: on the Postbus, guests can stay completely focused on the views.. One highlight is the Gries Glacier. It is still an impressive remains from the last Little Ice Age and a grand sight.





① **BLS RegioExpress Lötschberger.**

The BLS RegioExpress Lötschberger turns the scenic ride along the historic Lötschberg mountain route from Berne to Brig and Domodossola into an extraordinary experience. Railway and nature enthusiasts enjoy lovely views into the Kandertal Valley as well as the breathtaking rides over the viaducts at the north and south ramp.

② **BLS Boat Cruises on Lakes Thun and Brienz.**

The magnificent view of the world-famous “big three” of the Jungfrau region as well as numerous historic villages and castles against the backdrop of the picturesque scenery of the Bernese Oberland: these and many other highlights turn a cruise on Lake Thun and Lake Brienz into an unforgettable experience.

③ **GoldenPass Belle Epoque.**

The GoldenPass Belle Epoque is more than just a train. The moment guests step on, they feel like stepping back in time: the coaches are panelled in precious wood and adorned with gold-plated decorations. In softly upholstered seats, passengers enjoy the ride between Montreux and Zweisimmen in the style of the Orient Express. The GoldenPass Belle Epoque does not have any surcharge and operates daily and year-round.

④ **GoldenPass Panoramic.**

The GoldenPass Panoramic really lives up to its name: leisurely, it moves from Zweisimmen in the Bernese Oberland towards Montreux, the fashionable city on the shores of Lake Geneva. High panoramic windows allow travellers to immerse themselves in the diverse scenery – 365 days a year.

⑤ **Palm Express.**

From St. Moritz to Lugano: the Palm Express offers a bus journey rich in contrast. Behind the Maloja Pass, the street winds its way down the Bregaglia Valley. At Castasegna, the bus crosses the border and arrives little later in the Italian city of Chiavenna. The ride ends at the urban centre of Lugano in the Canton of Ticino.

⑥ **Treno Gottardo.**

The Treno Gottardo runs every hour alternately from Zurich, Lucerne and Basel along the Gotthard panoramic route towards the most sun-kissed part of Switzerland. The panoramic journey to Ticino promises impressive views of rugged mountain faces, deep blue lakes, and a wonderful Mediterranean atmosphere with palm trees and stately mansions.

⑦ **Vigezzina-Centovalli-Bahn.**

The Vigezzina-Centovalli railway takes passengers from the Italian town of Domodossola to Locarno. On the roughly 52-kilometre-long route, travellers get to enjoy fantastic views. The ride is nothing if not tempting: deep ravines, wild mountain ranges, and 83 bridges.

⑧ **Voralpen-Express.**

The Voralpen-Express between Central and Eastern Switzerland is the most beautiful combination of nature and culture. The copper-coloured train passes the impressive upland moor in Rothenthurm, continues through the rolling Toggenburg, and finally crosses the Sitter Viaduct – Switzerland’s highest railway viaduct.



# THEME ROUTES.



Cookie Train in summer, Emmental



## ① Cookie Train.

The Cookie Train connects Switzerland's capital Berne with the cities of Lucerne at the shores of Lake Lucerne and Interlaken in the heart of the Bernese Oberland. The visit to "the Kambly Experience", centre of fine biscuit making at Trubschachen, is a particular delight.

## ② Cheese Train.

This truly singular trip from Montreux to Château-d'Oex explores the world of cheese-making. The program includes highlights such as a delicious cheese fondue and a visit to the new Swiss Museum of Papercuts.

## ③ Chocolate Train.

Seeing, smelling, and tasting – all senses are engaged in experiencing characteristic Swiss landscapes and traditions aboard the Chocolate Train of the Montreux-Oberland Bernois Railway. The journey starts from Montreux towards the Gruyère region in the 1st or 2nd class coaches of the Belle Epoque. Travellers visit the chocolate factory and get a chance to explore the old town of Gruyères.

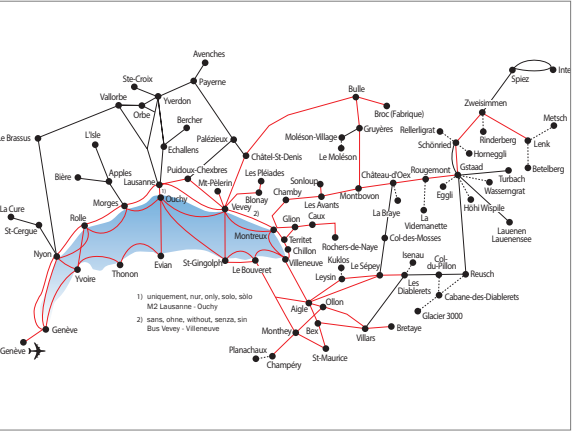




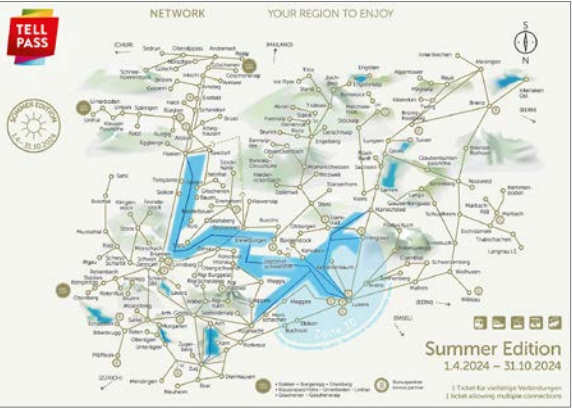
Steamboat “Stadt Luzern” on Lake Lucerne, Central Switzerland



Area of validity Berner Oberland Pass

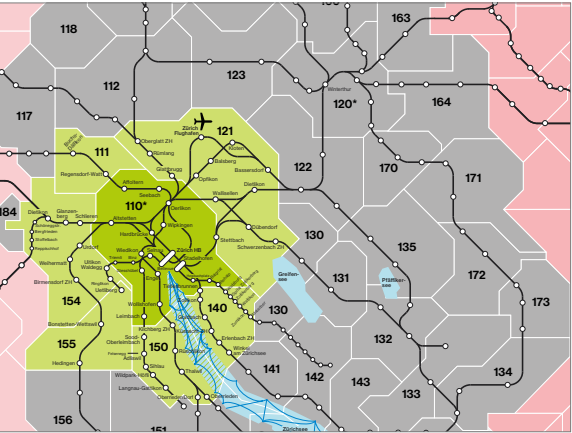


Area of validity Regional Pass Lake Geneva-Alps



Area of validity Tell-Pass - Central Switzerland

- ① **Berner Oberland Pass.** The Berner Oberland Pass offers the possibility to experience excursions by train, bus, boat and mountain railway in a combination of more than 60 transport companies. No matter where: in the mountains, along panoramic routes or on Lakes Thun and Brienz, the Berner Oberland Pass is your ticket.
- ② **Regional Pass Lake Geneva-Alps.** Gliding past the UNESCO World Heritage Site of the Lavaux aboard a historic paddle steamer, climbing to the Rochers-de-Naye on a cog railway or going in search of the delicacies of Switzerland on the Cheese Train or the Chocolate Train – the Regional Pass Lake Geneva-Alps makes it happen.
- ③ **Tell-Pass Central Switzerland.** Higher, steeper, singular – Central Switzerland is bound to be record-breaking. With the “Big 6” Stoos, Rigi, Pilatus, Stanserhorn, Titlis and Bürgenstock, the Tell-Pass combines the most spectacular mountain railways in this region. The Tell-Pass is available for 2, 3, 4, 5 or 10 consecutive days.
- ④ **Zürich Card – City Travel Pass Zurich.** In addition to unlimited travel on all public transport in Zurich and its surrounding area (2nd class in tram, bus, railway, boat and mountain railway), the Zürich Card also offers numerous benefits such as free admission to museums and discounts on a wide range of leisure and cultural venues.



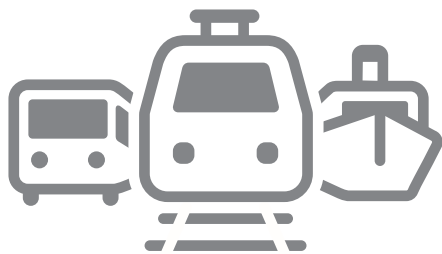
Area of validity Zürich Card - City Travel Pass Zurich





# FULL SERVICE EN ROUTE.

Tailor-made services such as global luggage services, comprehensive services at the station and on board, as well as helpful apps make for a carefree travel experience.



### Done with lugging suitcases

Luggage is conveniently delivered door-to-door within Switzerland, i. e. from hotel to hotel or to a private address. Various time slots are available for the collection of luggage. It is also possible to deliver from station to station. For this, luggage must be dropped off and picked up at the respective luggage counter.

There are offers for individual travellers as well as groups. Groups with a maximum of 50 pieces of luggage benefit from attractive flat rates. Luggage has to be registered no later than five working days prior to transport. It is delivered on the same day (day of departure) to any address within Switzerland.



### Domestic and international baggage services

From abroad, luggage can be delivered to any address within Switzerland with selected airlines. It can also be sent to certain train stations. This service is also available for car-free destinations. Depending on the arrival time at the airport, baggage is delivered on the same or the next day.



### WiFi at the train station

Guests stay well-connected thanks to free and fast internet access at more than 80 train stations. The same is true for all SBB national long-distance trains. The app “SBB FreeSurf” offers free, fast, and secure internet access. Travellers from abroad may surf the net free of charge with a SIM card from a participating provider.



### Catering on the train

Selected trains offer culinary either in SBB restaurants or SBB Bistros (on Intercity double-deck trains). To meet their guests’ culinary wishes, many train lines offer their 1st class passengers at-seat service.



### SBB Change

At some 130 railway stations in Switzerland, more than 100 currencies can be exchanged into Swiss Francs. Larger stations offer evening and weekend services at their currency exchange counters.



### Shopping paradise

Travellers can shop and eat almost at any Swiss train station. Numerous welcoming shops and cafés tempt visitors to linger at the heart of the train station.



### Working without interruptions

In the quiet compartment in 1st class travellers can read, work, or simply relax without being interrupted by unwelcome noise. Trains with quiet zones are indicated “RZ” on timetables. InterCity trains offer workspaces complete with power supply, optimised data transfer, amplifiers for mobile phone reception, and large work surfaces in 1st class. Trains with business zones are indicated “BZ” on timetables.



### Children are welcome

All InterCity double-deck trains are equipped with a jungle-style or dragon-themed family coach marked “FA”. Located on the mid-upper deck, these zones offer a playground for children to frolic around as much as they please. Also, all tables in family coaches are equipped with entertaining board games. Changing tables in the restrooms as well as pushchair parking bays are available on the lower deck.



## Safer Travel

Safe and secure all around. With these simple tips, nothing stands in the way of an unforgettable trip through Switzerland.

### Prior to travelling

- Have copies of important documents (passport, ID, etc.) made
- Never carry a lot of cash
- Print travel documents and take them with you
- Write down the IMEI number of your mobile phone



**ALL EYES  
ON ME!**

**SAFERTRAVEL.CH**

More information  
[safertravel.ch](http://safertravel.ch)



## Digital travel companion

Free of charge digital travel companion for journeys by train, bus and boat is available via App Store and Google Play Store.

### SBB Mobile App

- Integrated touch timetable
- Important travel information
- Purchasing point-to-point tickets, supersaver tickets and day passes
- Option to save selected connections
- Informative push notifications regarding trip



[sbb.ch/mobile](http://sbb.ch/mobile)



## Lost something?

When an item gets lost on the train or at the station, travellers can simply fill in a report online. The owner will be notified if the item has been recovered.

**Online Lost & Found**



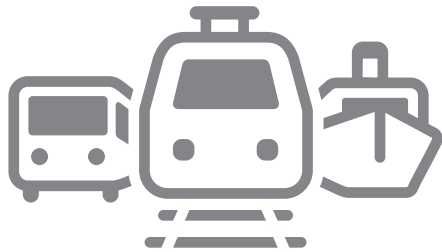
Personal customer service at Zurich main station





# STAYING INFORMED.

Whether news about products, prices, and offers, or just browsing for inspiration: Swiss Travel System AG informs followers on numerous channels and helps them stay abreast of the latest developments.



### Media & Trade Platform

The platform [mystsnet.com](https://mystsnet.com) offers relevant content for daily use. General information regarding products, prices, and sales can be easily found here. Fact sheets about the ticket range, maps, pictures and logos, as well as sales guides can be downloaded. A compact collection of the most important documents is available in the Media & Trade Kit and can be downloaded as a ZIP file. The latest information is published under “News”.



### Newsletter

Trade News are published quarterly in the form of an email newsletter. Apart from news about the Swiss Travel System product range, prices and offers, Trade News offer refreshing inspiration and tidings from the Swiss public transport world.

[Subscribe here.](#)



### Social Media

On our social media channels, public transport stars take centre stage! Travellers by train, bus and boat in Switzerland share their posts via #swisstravelsystem and #grandtraintour. Followers of the Swiss Travel System are always up to speed and discover Switzerland every day anew.

- [@swisstravelsystem](#)
- [@media\\_sts](#)
- [@swisstravelsystem](#)
- [Swiss Travel System AG](#)
- [@swisstravelsytem](#)
- [@STS\\_China](#)



## Swiss Travel System Excellence E-Learning

The learning platform about Swiss public transport: the Swiss Travel System Excellence E-Learning helps to bring one’s know-how up to speed in a playful and easy way.

Heidi and Peter accompany participants through the various courses and tell them everything there is to know about Swiss public transport. Those who pass the final tests will be awarded the title Swiss Travel System Excellence Expert. Appetite for more? The new Excellence Talk format is an ideal addition and provides a closer look behind the scenes of selected transport companies.

- Five reasons to register:
- Experiencing a modern and entertaining e-learning program
  - Participating in regular raffles and winning attractive prizes
  - Bringing one’s know-how up to speed every year
  - Becoming a Swiss Travel System Excellence Expert – free of charge
  - Advise customers more effectively and generate higher sales

Register now and win great prizes:  
[elearning.mystsnet.com](https://elearning.mystsnet.com)



# ABOUT US.

Swiss Travel System AG is a marketing company co-founded by Swiss Federal Railways (SBB), Switzerland Tourism, and five Swiss public transport providers. The company started its operations in 2011.

Swiss Travel System AG’s Mandate is to bundle and purposefully direct the marketing of Swiss public transport abroad. Our core tasks include the worldwide marketing of domestic traffic and of the incoming ticket range as well as the promotion of cross-border traffic from neighbouring countries.

Swiss Travel System AG is headquartered in Zurich, right next to the main station.

### Imprint.

Editor  
Swiss Travel System AG  
Lagerstrasse 33  
CH-8004 Zürich  
[info@swisstravelsystem.com](mailto:info@swisstravelsystem.com)  
[mystsnet.com](https://mystsnet.com)

Swiss Travel System.



### Your contacts.



UK, South Korea, Australia, Japan & United Arab Emirates  
Andreas Nef [andreas.nef@swisstravelsystem.com](mailto:andreas.nef@swisstravelsystem.com)



Greater China  
Una Jing Sun [una.sun@swisstravelsystem.com](mailto:una.sun@swisstravelsystem.com)



North America  
Christelle Deillon [christelle.deillon@swisstravelsystem.com](mailto:christelle.deillon@swisstravelsystem.com)



India  
Lyandra D'Souza [lyandra.dsouza@swisstravelsystem.com](mailto:lyandra.dsouza@swisstravelsystem.com)



South East Asia  
Rudy Wiratno [rudy.wiratno@swisstravelsystem.com](mailto:rudy.wiratno@swisstravelsystem.com)



Italy, Spain, Brazil & Netherlands  
Jennyfer Cirignotta [jennyfer.cirignotta@swisstravelsystem.com](mailto:jennyfer.cirignotta@swisstravelsystem.com)



Germany, France & Austria  
Estelle Grassler [estelle.grassler@swisstravelsystem.com](mailto:estelle.grassler@swisstravelsystem.com)



Global Key Account Manager, Incoming Switzerland & Sweden  
Nabil Bahous [nabil.bahous@swisstravelsystem.com](mailto:nabil.bahous@swisstravelsystem.com)

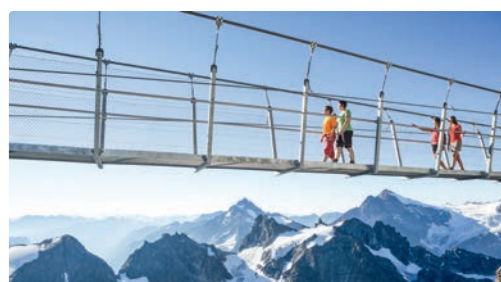


# TITLIS GLACIER MOUNTAIN

Have a fabulous day out in the snow at over 3000 metres.

SWISS  
TRAVEL PASS

50%  
DISCOUNT



## TITLIS CLIFF WALK

Europe's highest suspension bridge



## TITLIS ROTAIR

First revolving cable car



[WWW.TITLIS.CH](http://WWW.TITLIS.CH)

TITLIS CABLEWAYS, HOTELS & RESTAURANTS  
6391 ENGELBERG | SWITZERLAND | PHONE +41 (0)41 639 50 50



TITLIS GLACIER MOUNTAIN WELCOME TO THE HEART OF SWITZERLAND